

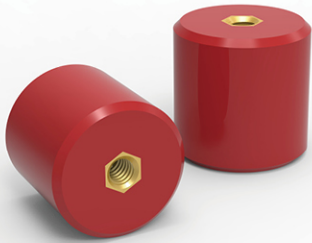
MNS INSULATOR SERIES



Product Features

Operating Temperature: $-40^{\circ}\text{C} \sim +140^{\circ}\text{C}$
screw nut: Brass. Steel with Zn coating
Material: BMC (Bough Moulding Compound)
SMC (Sheet Moulding Compound)
Color, Nut, material In capability accordance with customer needs
Installation Screw (Accessory Option)

MNS Insulator Series



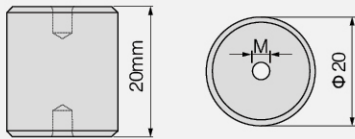
Product Model and Meanings



Product Features:

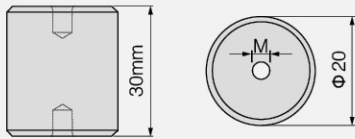
Operating Temperature: -40°C ~ +140°C
 screw nut: Brass. Steel with Zn coating
 Material: BMC (Bough Moulding Compound)
 SMC (Sheet Moulding Compound)
 Color, Nut, material In capability accordance with customer needs
 Installation Screw (Accessory Option)

MNS-20×20 Insulator



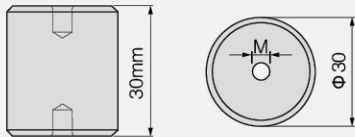
| | |
|------------------------|-----|
| Voltage withstand(KV) | 8 |
| Torgue strength (N/m) | 10 |
| Thread (mm) | 5/6 |
| Thread Depth (mm) | 7 |

MNS-20×30 Insulator



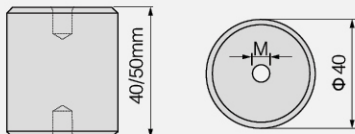
| | |
|------------------------|-----|
| Voltage withstand(KV) | 8 |
| Torgue strength (N/m) | 10 |
| Thread (mm) | 6/8 |
| Thread Depth (mm) | 10 |

MNS-30×30 Insulator



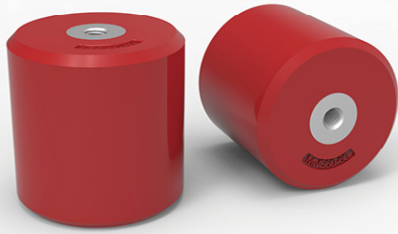
| | |
|------------------------|-----|
| Voltage withstand(KV) | 8 |
| Torgue strength (N/m) | 10 |
| Thread (mm) | 6/8 |
| Thread Depth (mm) | 10 |

MNS-40×40(50) Insulator



| | |
|------------------------|------|
| Voltage withstand(KV) | 15 |
| Torgue strength (N/m) | 20 |
| Thread (mm) | 8/10 |
| Thread Depth (mm) | 11 |

MNS Insulator Series



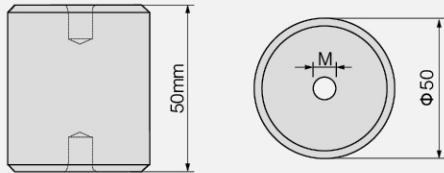
Product Model and Meanings



Product Features:

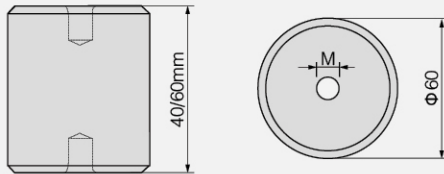
Operating Temperature: -40°C ~ +140°C
 screw nut: Brass. Steel with Zn coating
 Material: BMC (Bough Moulding Compound)
 SMC (Sheet Moulding Compound)
 Color, Nut, material In capability accordance with customer needs
 Installation Screw (Accessory Option)

MNS-50×50



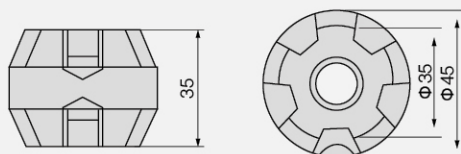
| | |
|------------------------|------|
| Voltage withstand(KV) | 15 |
| Torgue strength (N/m) | 20 |
| Thread (mm) | 8/10 |
| Thread Depth (mm) | 11 |

MNS-60×60(40)



| | |
|------------------------|-------|
| Voltage withstand(KV) | 15 |
| Torgue strength (N/m) | 20 |
| Thread (mm) | 10/12 |
| Thread Depth (mm) | 11 |

U4535S Insulator



| | | |
|------------------------|----|---------------|
| Voltage withstand(KV) | 6 | |
| Torgue strength (N/m) | 12 | |
| Thread (mm) | 10 | UNC 3/8-16 |
| Thread Depth (mm) | 12 | |