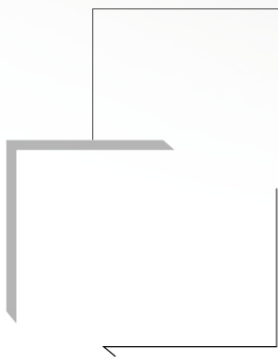
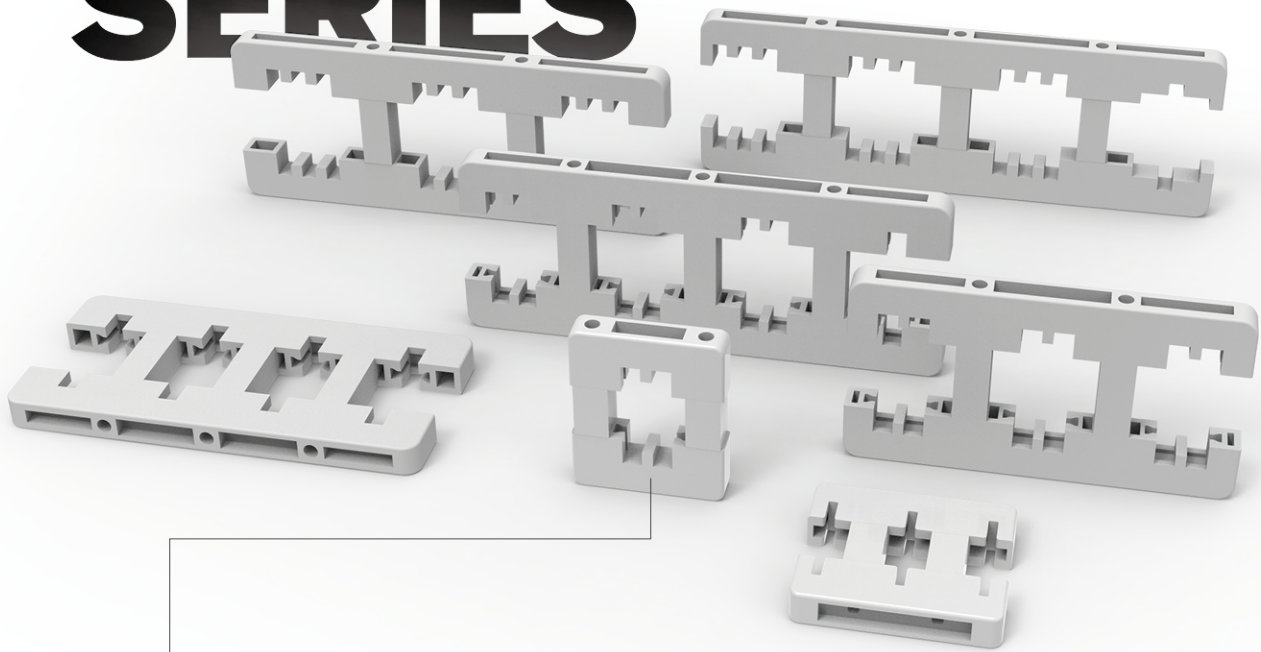


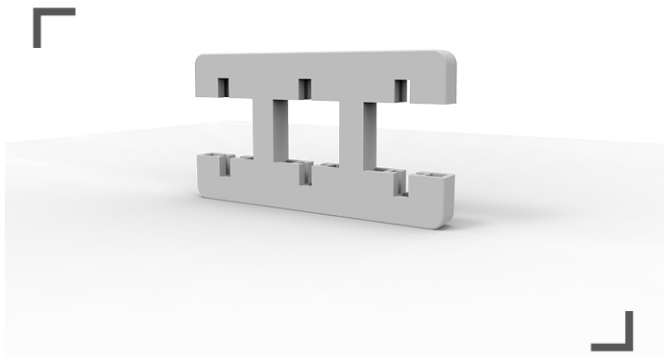
# HC BUSBAR CLIP SERIES



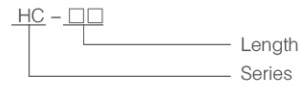
## Product Features

Operating Temperature:  $-40^{\circ}\text{C}$  ~  $+140^{\circ}\text{C}$   
screw nut: Brass. Steel with Zn coating  
Material: BMC (Bough Moulding Compound)  
SMC (Sheet Moulding Compound)  
Color, Nut, material In capability accordance with customer needs  
Installation Screw (Accessory Option)

# HC Busbar Clip



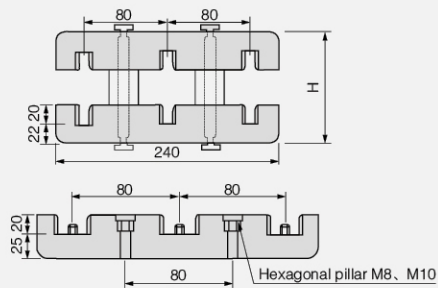
## Product Model and Meanings



## Product Features:

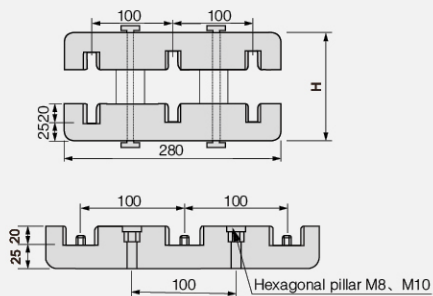
Operating Temperature:  $-40^{\circ}\text{C} \sim +140^{\circ}\text{C}$   
 screw nut: Brass. Steel with Zn coating  
 Material: BMC (Bough Moulding Compound)  
 SMC (Sheet Moulding Compound)  
 Color, Nut, material In capability accordance with customer needs  
 Installation Screw (Accessory Option)

### HC1-240L Insulation Busbar Clip



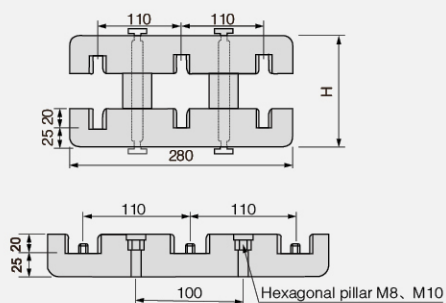
Busbar Clip Specification	H	Busbar Clip Specification	H
4 × 40; □ × 40	90	10 × 100; □ × 100	150
5 × 50; □ × 50	100	10 × 120; □ × 120	170
6 × 60; □ × 60	110	10 × 125; □ × 125	175
8 × 80; □ × 80	130		

### HC2-280L Insulation Busbar Clip



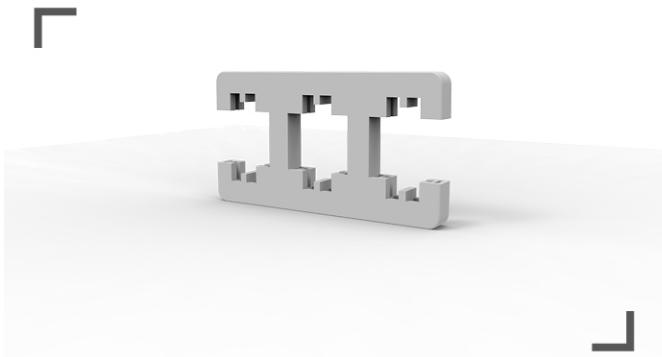
Busbar Clip 规格	H	Busbar Clip Specification	H
40 × 40; □ × 40	90	10 × 100; □ × 100	150
5 × 50; □ × 50	100	10 × 120; □ × 120	170
6 × 60; □ × 60	110	10 × 125; □ × 125	175
8 × 80; □ × 80	130		

### HC3-280L Insulation Busbar Clip

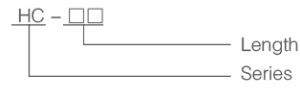


Busbar Clip Specification	H	Busbar Clip Specification	H
4 × 40; □ × 40	90	10 × 100; □ × 100	150
5 × 50; □ × 50	100	10 × 120; □ × 120	170
6 × 60; □ × 60	110	10 × 125; □ × 125	175
8 × 80; □ × 80	130		

# HC Busbar Clip



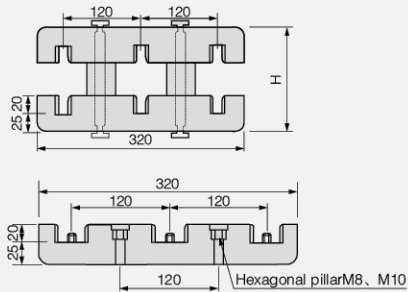
## Product Model and Meanings



## Product Features:

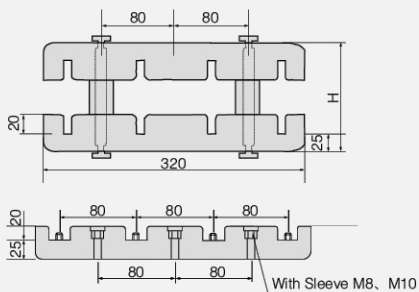
Operating Temperature:  $-40^{\circ}\text{C} \sim +140^{\circ}\text{C}$   
 Material: BMC(Bough Moulding Compound)  
 SMC(Sheet Moulding Compound)  
 Color,Nut,material In capability accordance with customer needs  
 Note: This product of the busbar sleeve heat shrinkable tube specifications increased by 3mm

### HC4-320L Insulation Busbar Clip



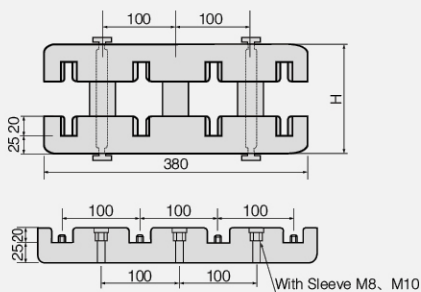
Busbar Clip Specification	H	Busbar Clip Specification	H
40 × 40; □ × 40	90	10 × 100; □ × 100	150
5 × 50; □ × 50	100	10 × 120; □ × 120	170
6 × 60; □ × 60	110	10 × 125; □ × 125	175
8 × 80; □ × 80	130		

### HC5-320L Insulation Busbar Clip



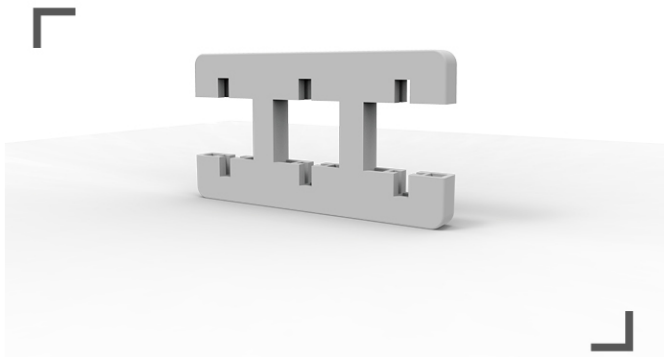
Busbar Clip Specification	H	Busbar Clip Specification	H
4*40; □ *40	90	10*100; □ *100	150
5*50; □ *50	100	10*120; □ *120	170
6*60; □ *60	110	10*125; □ *125	175
8*80; □ *80	130		

### HC6-380L Insulation Busbar Clip

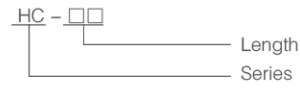


Busbar Clip Specification	H	Busbar Clip Specification	H
4*40; □ *40	90	10*100; □ *100	150
5*50; □ *50	100	10*120; □ *120	170
6*60; □ *60	110	10*125; □ *125	175
8*80; □ *80	130		

# HC Busbar Clip



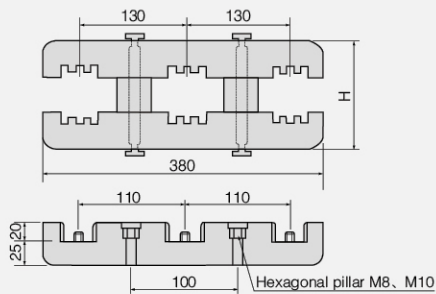
## Product Model and Meanings



## Product Features:

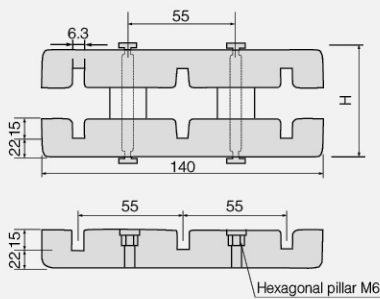
Operating Temperature: -40°C ~ +140°C  
 Material: BMC (Bough Moulding Compound)  
 SMC (Sheet Moulding Compound)  
 Color, Nut, material In capability accordance with customer needs  
 Note: This product of the busbar sleeve heat shrinkable tube specifications increased by 3mm

### HC6-380L Insulation Busbar Clip



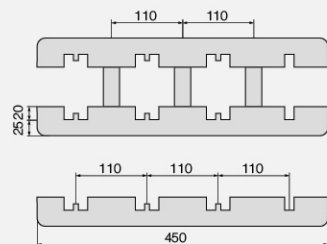
Busbar Clip Specification	H	Busbar Clip Specification	H
40*40; □ *40	90	10*100; □ *100	150
5*50; □ *50	100	10*120; □ *120	170
6*60; □ *60	110	10*125; □ *125	175
8*80; □ *80	130		

### HC3A-140L Vertical Busbar Clip



Busbar Clip Specification	H	Busbar Clip Specification	H
40*40; □ *40	90	10*100; □ *100	150
5*50; □ *50	100	10*120; □ *120	170
6*60; □ *60	110	10*125; □ *125	175
8*80; □ *80	130		

### HC7-450L Insulation Busbar Clip

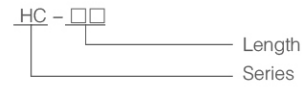


Busbar Clip Specification	H	Busbar Clip Specification	H
40*40; □ *40	90	10*100; □ *100	150
5*50; □ *50	100	10*120; □ *120	170
6*60; □ *60	110	10*125; □ *125	175
8*80; □ *80	130		

# HC Busbar Clip



## Product Model and Meanings



## Product Features:

Operating Temperature: -40°C ~ +140°C

Material: BMC (Bough Moulding Compound)

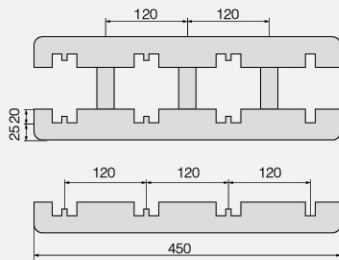
SMC (Sheet Moulding Compound)

Color, Nut, material In capability accordance with customer needs

Note: This product of the busbar sleeve heat shrinkable tube specifications increased by 3mm

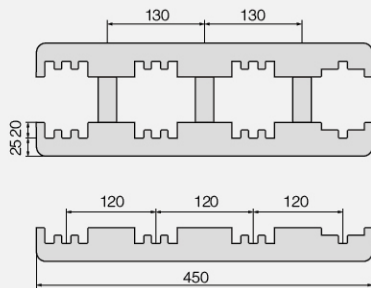


### HCB-450L Insulation Busbar Clip



Busbar Clip Specification	H	Busbar Clip Specification	H
4*40; □ *40	90	10*100; □ *100	150
5*50; □ *50	100	10*120; □ *120	170
6*60; □ *60	110	10*125; □ *125	175
8*80; □ *80	130		

### HC9-450L Vertical Busbar Clip



Busbar Clip Specification	H	Busbar Clip Specification	H
40*40; □ *40	90	10*100; □ *100	150
5*50; □ *50	100	10*120; □ *120	170
6*60; □ *60	110	10*125; □ *125	175
8*80; □ *80	130		