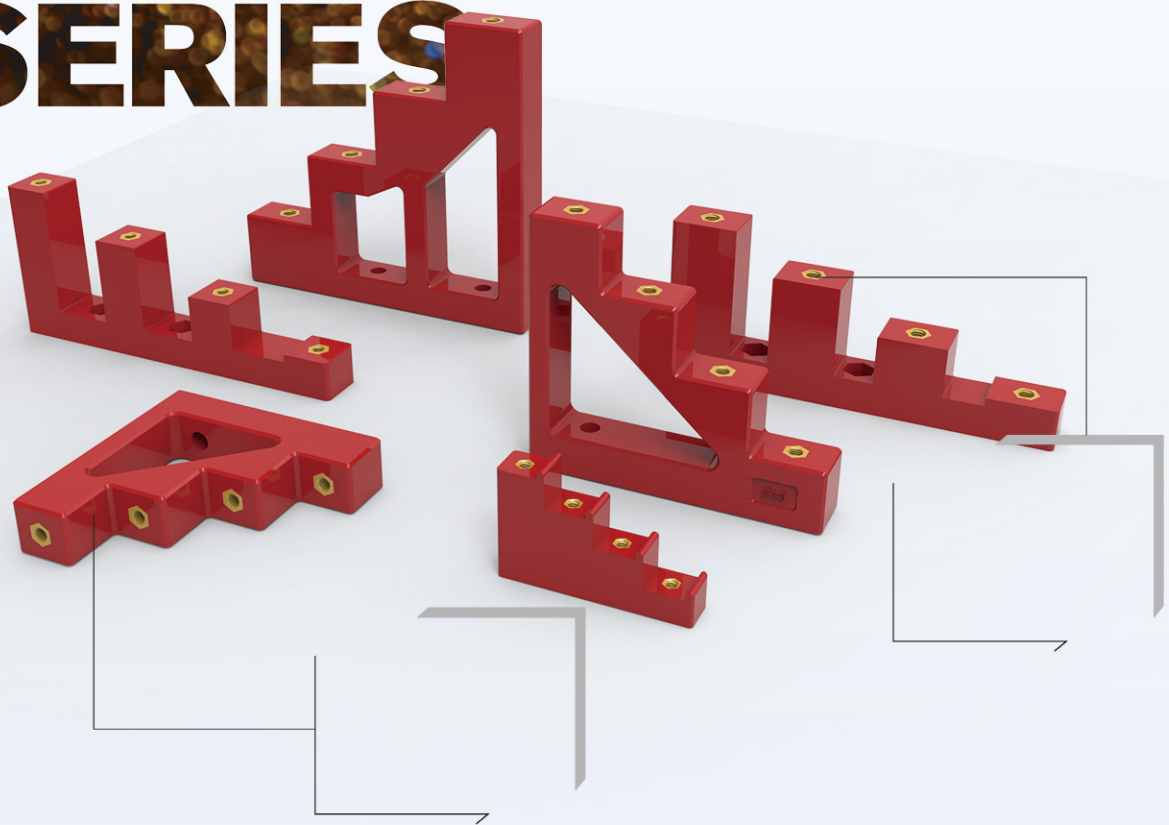


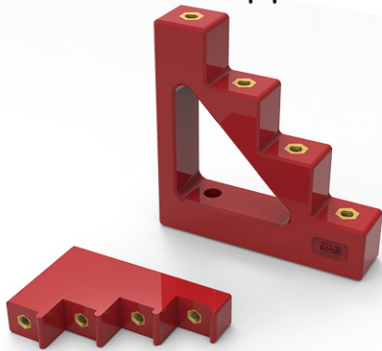
CT INSULATOR SERIES



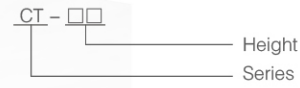
Product Features

Operating Temperature: $-40^{\circ}\text{C} \sim +140^{\circ}\text{C}$
screw nut: Brass. Steel with Zn coating
Material: BMC(Bough Moulding Compound)
SMC(Sheet Moulding Compound)
Color, Nut, material In capability accordance with customer needs
Installation Screw: Option

CT Neutral Bar support



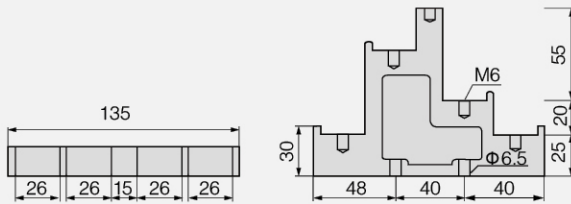
Product Model and Meanings



Product Features:

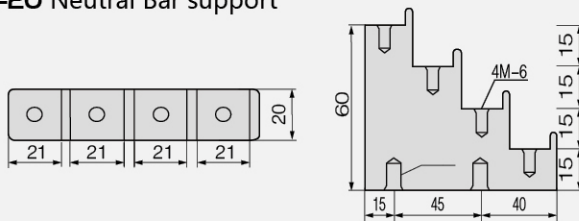
- Operating Temperature: -40°C ~ +140°C
- screw nut: Brass. Steel with Zn coating
- Material: BMC (Bough Moulding Compound)
- SMC (Sheet Moulding Compound)
- Color, Nut, material In capability accordance with customer needs
- Installation Screw (Accessory Option)

CT5-25 Neutral Bar support



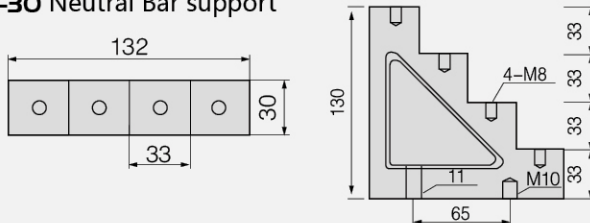
Product Name	Model	Length(mm)
CT Neutral Bar support	CT5-25	135
Height (mm)	Screw	Bottom nut
100	M6	M6

CT4-20 Neutral Bar support



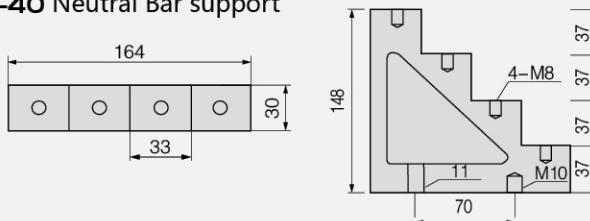
Product Name	Model	Length(mm)
CT Neutral Bar support	CT4-20	110
Height (mm)	Screw	Bottom nut
100	M8	M8

CT4-30 Neutral Bar support



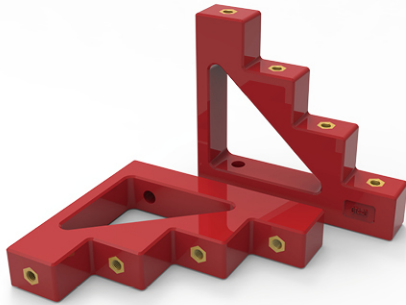
Product Name	Model	Length(mm)
CT Neutral Bar support	CT4-30	132
Height (mm)	Screw	Bottom nut
130	M8	M10

CT4-40 Neutral Bar support

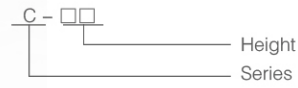


Product Name	Model	Length(mm)
CT Neutral Bar support	CT4-40	164
Height (mm)	Screw	Bottom nut
148	M8	M10

CJ Neutral Bar support



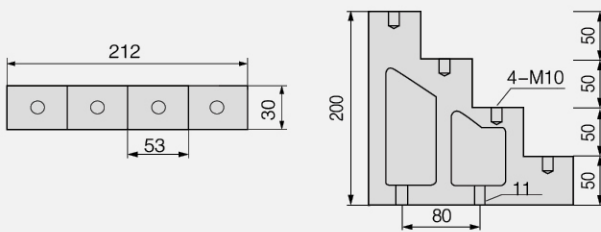
Product Model and Meanings



Product Features:

Operating Temperature: -40°C ~ +140°C
 screw nut: Brass. Steel with Zn coating
 Material: BMC (Bough Moulding Compound)
 SMC (Sheet Moulding Compound)
 Color, Nut, material In capability accordance with customer needs
 Installation Screw (Accessory Option)

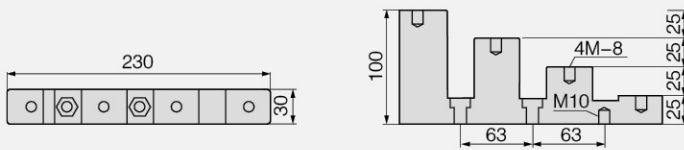
CT4-50 Neutral Bar support



Product Name	Model	Length
CT Neutral Bar support	CT4-50	212

Height (mm)	Screw	Bottom nut
200	M10	M10

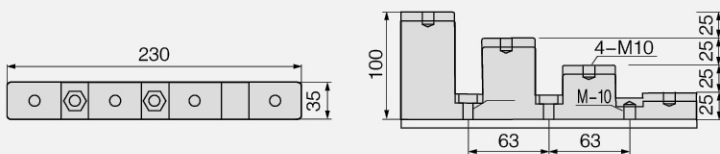
CJ4-30 Neutral Bar support



Product Name	Model	Length
CJ Neutral Bar support	CJ4-30	230

Height (mm)	Screw	Bottom nut
100	M8	M10

CJ4-40 Neutral Bar support



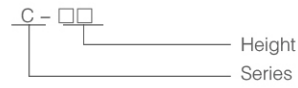
Product Name	Model	Length
CJ Neutral Bar support	CJ4-40	230

Height (mm)	Screw	Bottom nut
100	M10	M10

C Insulator Series



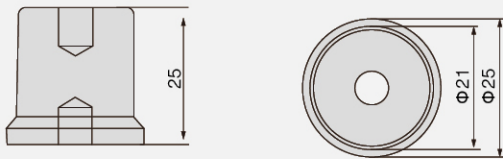
Product Model and Meanings



Product Features:

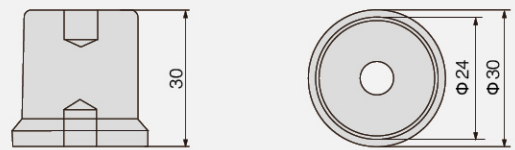
Operating Temperature: -40°C ~ +140°C
 screw nut: Brass. Steel with Zn coating
 Material: BMC (Bough Moulding Compound)
 SMC (Sheet Moulding Compound)
 Color, Nut, material In capability accordance with customer needs
 Installation Screw (Accessory Option)

C-25 Insulator



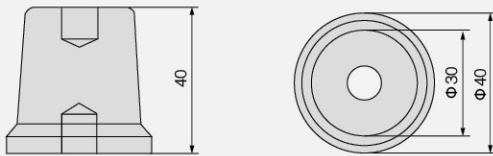
Height (mm)	Diameter (mm)	Thread
25	25	M6

C-30 Insulator



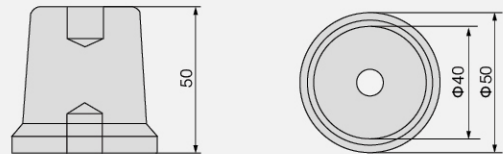
Height (mm)	Diameter (mm)	Thread
30	30	M6/M8

C40 Insulator



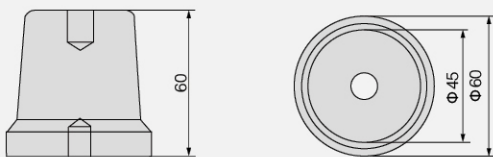
Height (mm)	Diameter (mm)	Thread
40	40	M8/M10

C-50 Insulator



Height (mm)	Diameter (mm)	Thread
50	50	M10

C-60 Insulator



Height (mm)	Diameter (mm)	Thread
60	60	M10/M12